



Dual source



4G wireless upload to the third party



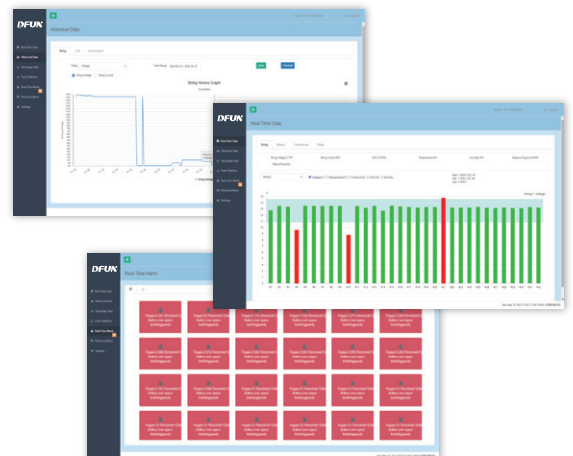
Build-in Webpage monitoring software



5 years history Data storage

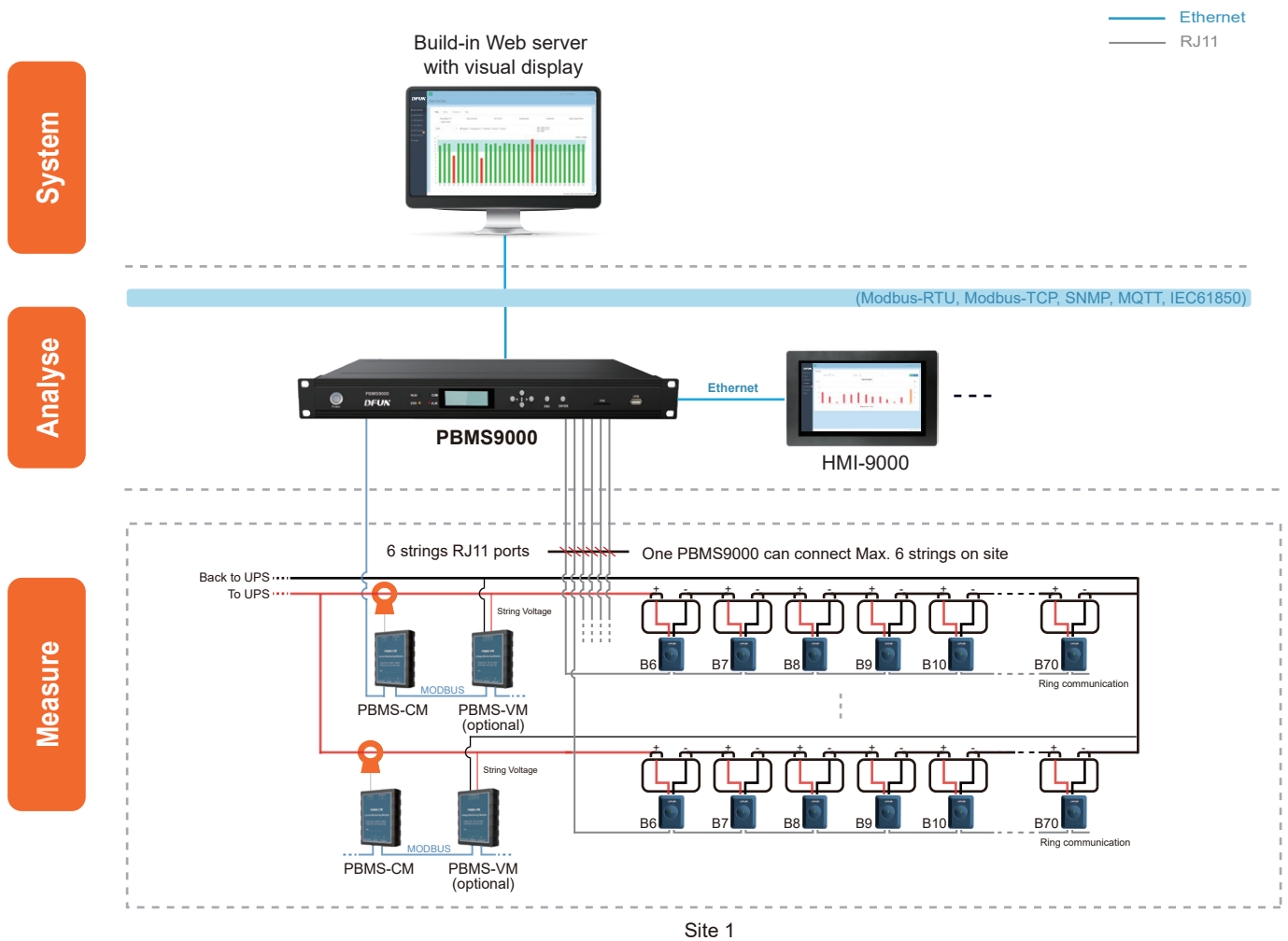
Feature

- Apply to UPS and data center application
- Measure lead-acid or multi-pole battery
- Ring communication, any communication failure will not affect other sensors communication
- Monitor battery voltage, current, impedance, insulation resistance, ripple current & voltage, SOC, SOH, etc.
- Support Modbus, SNMP, MQTT and IEC61850 protocols
- Auto-sensing for the battery sensor's ID address
- Dual-source to avoid power shutdown
- Anti-interference design, support to connect with high-frequency UPS
- Comply with IEEE 1188-2005



PBMS9000 for Large-scale Data Center

System Structure



Management Layer

> PBMS9000 Battery Monitoring System Main Controller

- Standard 1 U design for distribution cabinet
- Dual-source to avoid power shutdown
- Built-in web server with visual display
- Monitor Max. 6 strings battery, in a total of 420 batteries
- Measure battery string current & voltage, ripple voltage & current, charge & discharge current, internal temperature, impedance, insulation resistance, ambient temperature & humidity, SOC and SOH
- Alarm message by SMS or Email
- Support Modbus-TCP, Modbus-RTU, SNMP and IEC61850 protocols
- Support MQTT for JSON format to data upload
- 1 RS485 port, 2 Ethernet ports and 1 4G Antenna port to data upload
- 6 DI ports (digital Input connecting)
- 6 DO ports (sound and light alarm)

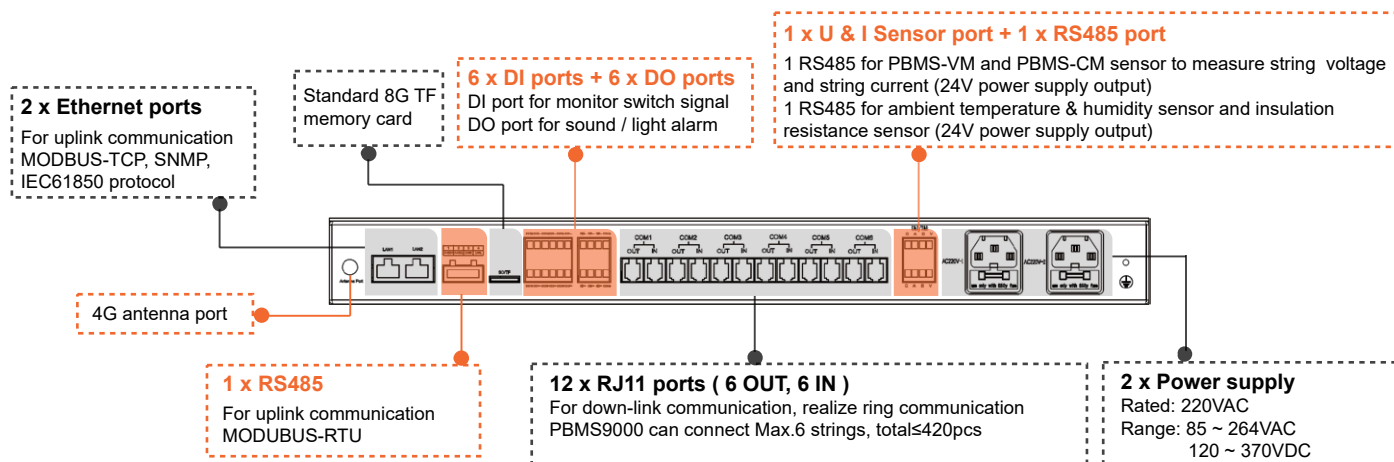


Pre-install & pre-wiring for PBMS9000 and HMI-9000 (optional)



PBMS9000 for Large-scale Data Center

> Dimension and Installation



> Technical Specification

CPU	ARM cortex A7 528MHz	Up-link communication	2 Ethernet ports (10/100M), MODBUS-TCP, SNMP, IEC61850 1 RS485 port, MODBUS-RTU, baudrate: 9600bps, 19200bps, 38400bps (optional)		
Memory	512MB flash, 4G EMMC + 8G TF memory card		Down-link communication	6 Channels RJ11 ports, each port Max. connect ≤ 70pcs batteries, total Max. 420pcs	
Display	2-inch LCD with backlight			Measure range	Voltage
MTBF	≥ 100,000 hours	Ripple voltage			1 ~ 6 strings, range: 2 ~ 100V (peak), resolution: 0.01V
Power supply	Rated: 220VAC Range: 85 ~ 264VAC 120 ~ 370VDC	Current	1 ~ 6 strings, range: -2000 ~ 2000ADC (±2.0%, under 15°C ~ 35°C), resolution: 0.01A		
Dimension	Standard 19-inch 1 U device 483mm × 206mm × 44.5mm (W*D*H) Open hole: 440mm×46mm (L*H)	Ripple current	1 ~ 6 strings, according to the rated current of the hall sensor, range: DC 0 ~ 0.4*I (peak), resolution: 0.01A		
Power consumption	< 15W (only main controller)	Operation environment	Working temperature: -15°C ~ 55°C Storage temperature: -40°C ~ 70°C Humidity: 5% ~ 95% non-condensing		
Additional port	6 x DI dry contact 6 x DO relay output, 250VAC/5A or 30VDC/5A		Extension sensor (optional)	- RS485 for 1~6 strings string voltage & current measuring - RS485 for Max. 6 strings ambient temperature & humidity measuring - RS485 for 1~6 strings DC insulation resistance measuring	

String Measuring Sensor

> PBMS-CM String Current Measuring Sensor & Hall Sensor

- One string need 1 PBMS-CM, each PBMS-CM with 2 hall sensor ports
- Measure battery string charge and discharge current, ripple current
- Measure multi-pole battery's string charge and discharge current and ripple current with flexible module and hall sensor
- Accessories:
 - 1) Hall sensor and cable: range from 0~±1000A with 2m cable
 - 2) Communication cable : 5m with RJ45 port



PBMS-CM



Hall Sensor

Item	Power supply	Measuring range		Environment
		String current	Ripple current	
PBMS-CM	24VDC (range: 9 ~ 32VDC) Power consumption: <0.5W	1 Hall sensor: -1000 ~ 1000A 2 Hall sensor: -2000 ~ 2000A (±2.0%, 15°C ~ 35°C)	20% of Hall sensor Rated current (peak value) Frequency: 50Hz ~ 1KHz	Working temperature: 0°C ~ 45°C Working temperature limit: -15°C ~ 55°C Humidity: 5% ~ 95%RH, non-condensing Storage temperature: -40°C ~ 70°C

PBMS9000 for Large-scale Data Center

Battery Cell Sensor

> PBAT51-02/PBAT51-12 Battery Cell Sensor

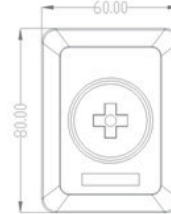
- PBAT51-02 is for 2V Battery, PBAT51-12 is for 12V Battery
- Monitoring individual Battery Voltage, Internal temperature (Negative Pole), impedance (Ohmic Value)
- Auto-Balancing
- 3M Adhesive Tape Mounting
- Accessories:
 - 1) Battery Measuring Cable: 30cm
 - 2) Communication Cable: 40cm & 70cm with RJ11 port (Optional)



Running status



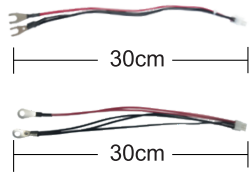
Abnormal status

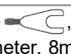



> Technical Specification

Item	Rated Input Voltage	Measuring Range		
		Voltage	Internal Temperature	Impedance
PBAT51-02	2V	1.6V~2.6V(±0.2%)	-20°C~+85°C (±1°C)	0.1mΩ ~ 50mΩ Repeatability Error: 1.0%±25uΩ Conformity Error: 2.0% ±50uΩ
PBAT51-12	12V	7.5V~15.6V(±0.2%)		

> Dimension and Installation



Battery Measuring Cable	
Length	30cm
Terminal & Size	U Type  , HoleDiameter. 8mm
	O Type  , HoleDiameter. 8mm



Extension Module (Optional)

> Ambient temperature & humidity sensor

- Dual RJ45 interface, fast wiring, support cascade use
- Adsorption by magnet
- Temperature: -20°C ~ 60°C (±0.4°C), resolution: 0.1°C. Humidity: 0.1~100%RH (±3%RH), resolution: 0.1%RH



> Hydrogen (H₂) sensor

- Class of protection: IP65
- Measuring range: 0 ~ 1000ppm
- Accuracy: ±5%FS
- Resolution: 1ppm (100KΩ ~ 50KΩ)



> DC insulation resistance sensor

- Measuring range: 1KΩ ~ 30MΩ
- Measurement accuracy: 10% (100KΩ ~ 50KΩ)



> 10.1-inch Android HMI

- Touch-screen HMI for local display and operation
- OS: Android 10.0
- CPU: R818 (4-core A53 1.6GHz)
- Running memory: 1GB,
- EMMC: 8GB
- Support the reading and configuration of all parameters of the system





> PBMS-VM String Voltage Measuring Sensor

- One PBMS-VM can measure 1 string's voltage
- Measure battery string voltage and ripple voltage



PBMS9000 for Large-scale Data Center

Order Information

System Structure		Model	Description	Remark
Management layer		PBMS9000-L	Battery monitoring system main controller with 4G antenna port (standard)	One per each UPS One PBMS9000 can monitor Max. 6 strings, Max. 420pcs batteries
Management layer		PBMS9000-L-CP	Battery monitoring system main controller with 4G antenna port, IEC61850 protocol	
String measuring sensor		PBMS-CM	String current measuring sensor	One per each string, each has 2 hall sensor ports, can connect Max. 2 hall sensor. If use for multi-pole battery, then we can configure PBMS-CM according to the number of pole. Hall sensor and cable: range from 0 ~ ±1000A with 2m cable. Communication cable: 5m with RJ45 port
		PBMS-VM	String voltage measuring sensor	One per each string (optional)
Battery cell sensor		PBAT 51-02	2V battery cell sensor	One per battery cell
		PBAT 51-12	12V battery cell sensor	One per battery cell
Accessory	Cell sensor communication cable	PBAT-COM-40	Cable terminal: RJ11 port, length: 40cm (standard)	
		PBAT-COM-70	Cable terminal: RJ11 port, length: 70cm	
	Battery measuring cable	PBAT-C1-U-M8-30	Cable terminal: U type  , hole diameter: 8mm, length: 30cm (standard)	
		PBAT-C1-O-M8-30	Cable terminal: O type  , hole diameter: 8mm, length: 30cm	
	Hall sensor for PBMS-CM	CS050EK1T5	Rated input: 50A	Measure range: 0 ~ ±100A, Φ20mm
		CS100EK2T5	Rated input: 100A	Measure range: 0 ~ ±200A, Φ40mm
		CS200EK2T5	Rated input: 200A	Measure range: 0 ~ ±400A, Φ40mm
		CS300EK2T5	Rated input: 300A	Measure range: 0 ~ ±600A, Φ40mm
		CS400EK2T5	Rated input: 400A	Measure range: 0 ~ ±800A, Φ40mm
		CS500EK2T5	Rated input: 500A	Measure range: 0 ~ ±1000A, Φ40mm
Optional module	HMI for local display & operation	HMI-9000	10-inch touch-screen HMI for local display & operation	One per one PBMS9000 Communication with PBMS9000 via Ethernet
		HDR-30-12	12VDC power coverter (220VAC to 12VDC)	If selected HMI-PBMS9000, then must select HDR-30-12 power supply converter
	Ambient temperature & humidity	H-THDRJ45	Temperature: -20°C ~ 60°C (±0.4°C) Humidity: 0 ~ 100%RH (±3%RH)	1 PBMS9000 can connct Max. 6pcs
	DC insulation resistance sensor	PBMS-IM	Measuring range: 1KΩ ~ 30MΩ	One per each string, 1 PBMS9000 can connect Max. 6pcs
	Hydrogen (H ₂) Sensor	PBMS-H ₂	Measuring range: 0 ~ 1000ppm	One per one PBMS9000
	Cabinet for pre-wiring in factory	PBAT-BOX-260	Dimension: 535*260*350mm (W*H*D)	Pre-install & pre-wiring for PBMS9000 and HMI-9000

DFUN DFUN (ZHUHAI) CO., LTD.

6th Floor, Building A3, No. 7 Gangwan, Jintang Road, Tangjiawan Town, High-tech Zone, Zhuhai, Guangdong, China

+86 756 6123188

519085

info@dfuntech.com

www.dfuntech.com

Your Representative